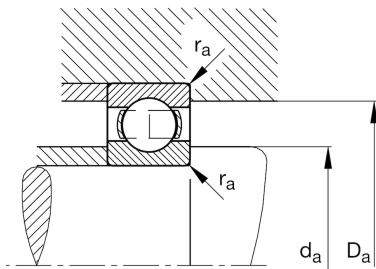
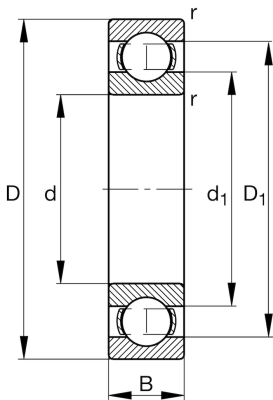


**FAG****6001-H-C3**

Deep groove ball bearing

Schaeffler ID:
0938748470030Deep groove ball bearing 60..-H, single
row, H-Series, steel sheet metal cage

Technical information

**Main Dimensions & Performance Data**

d	[12] mm	Bore diameter
D	[28] mm	Outside diameter
B	[8] mm	Width
C_r	[5.400] N	Basic dynamic load rating, radial
C_{0r}	[2.360] N	Basic static load rating, radial
C_{ur}	[126] N	Fatigue load limit, radial
n_G	[37.500] 1/min	Limiting speed
n_{gr}	[23.200] 1/min	Reference speed
	[0,019] kg	Weight

Mounting dimensions

$d_{a \min}$	[14] mm	Minimum diameter shaft shoulder
$D_{a \max}$	[26] mm	Maximum diameter of housing shoulder
$r_{a \max}$	[0,3] mm	Maximum fillet radius

Dimensions

r_{\min}	[0,3] mm	Minimum chamfer dimension
D_1	[23,8] mm	Shoulder diameter outer ring
d_1	[17,4] mm	Shoulder diameter inner ring

Temperature range

T_{\min}	[-30] °C	Operating temperature min.
T_{\max}	[120] °C	Operating temperature max.

Calculation factors

f_0	[13]	Calculation factor
-------	------	--------------------